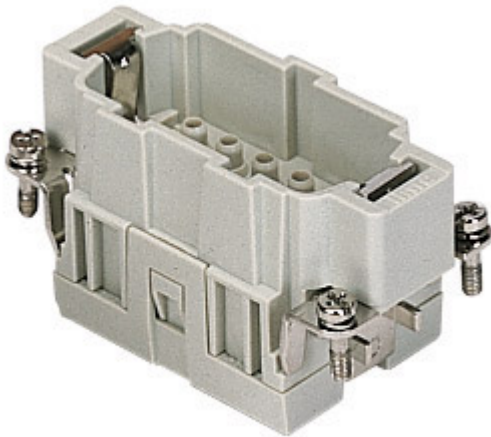


Part number

CCEM 10



Brief description:

male insert, 10 poles + PE, crimp connections, 16A, 500V, 6kV, 3, size "57.27", CLASS insert series

Product description		Approvals / Standards	
Model	male insert	Reference standard	EN 61984 (2001-11)
Version	crimp connections	Quality mark	, EAC
Series	CCE	Conformity	CQC, CE
Product type	for male contacts 16A	General ordering information	
Family	CLASS inserts	EAN13 code	8015747112659
Size	size "57.27"	Tariff number	85369095
N. of poles	10 poles +	Country of origin	Made in EU (IT)
Technical data		ETIM classification	EC000438
Current	16 A (A.C. and D.C.)	Packaging Information	
Voltage	500 V	Packaging length	210,00 mm
Rated impulse withstand voltage	6kV	Packaging height	130,00 mm
Pollution degree	3	Packaging width	240,00 mm
Operating temperature range (min, max)	-50°C ... +70°C	Packaging weight	1,41 kg
Mating cycles	≥ 200	Packaging volume	6,55 dm ³
IP degree of protection	IP20 without enclosure; IP65/IP66/IP67/IP68 with enclosure	Packaging description	Carton box
PE terminal stripping length	7 mm	Packaging quantity	30 Pcs
PE wire cross-section	0,14 - 4 mm ² ; AWG 20 - 12	Packaging EAN code	8015747112819
Further technical details		Sub-packaging weight	0,24 kg
Characteristics according to EN 61984	16A 500V 6kV 3; 16A 400/690V 6kV 2	Sub-packaging description	Carton
Insulation resistance	≥ 1 GΩ	Sub-packaging quantity	5 Pcs
Rated voltage according to UL/CSA	600V	Sub-packaging EAN barcode	8015747112826
UL 94 flammability rating	V-0		
Weight	47,00 g		

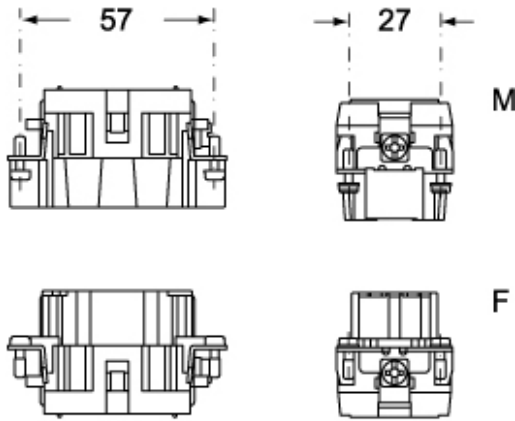
Part number

CCEM 10

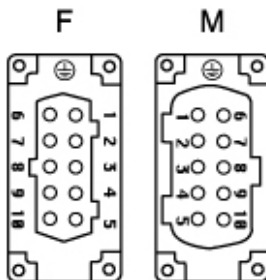


Catalogue drawings

CCEM 10

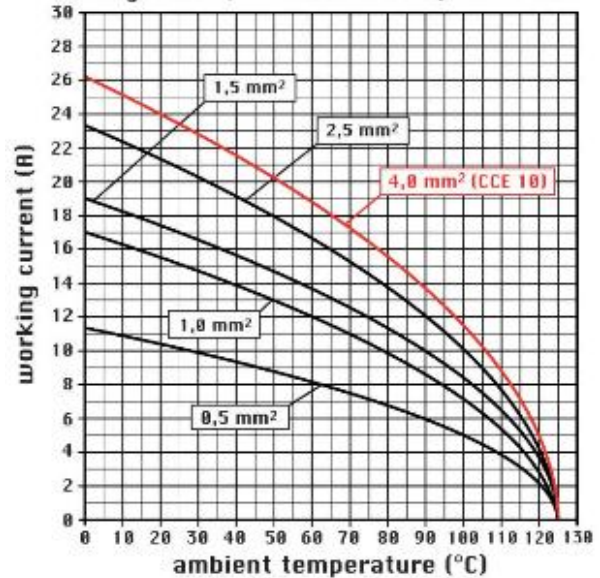


CCEF 10



Catalogue drawings

diagram CN, CNE and CCE 10 poles



Notes

CCEF/M 10 inserts:

- characteristics according to EN 61984:
(16A 500V 6kV 3)
(16A 400/690V 6kV 2)
- rated voltage according to UL/CSA: 600V
- insulation resistance: > 10 GOhm
- ambient temperature limit: -40 °C ... +125 °C
- are made of self-extinguishing thermoplastic resin UL 94 V0
- mechanical life: > 500 cycles
- contact resistance: < 1 mOhm
- enclosures: size "57.27":
C-TYPE IP65/IP66
C7 IP67 stainless steel lever
V-TYPE IP65/IP66
stainless steel lever
T-TYPE IP65 insulating
JEI zinc-plated steel lever
BIG hoods
W-TYPE aggressive environments.
EMC
central lever

IP68

- panel supports: page:
COB